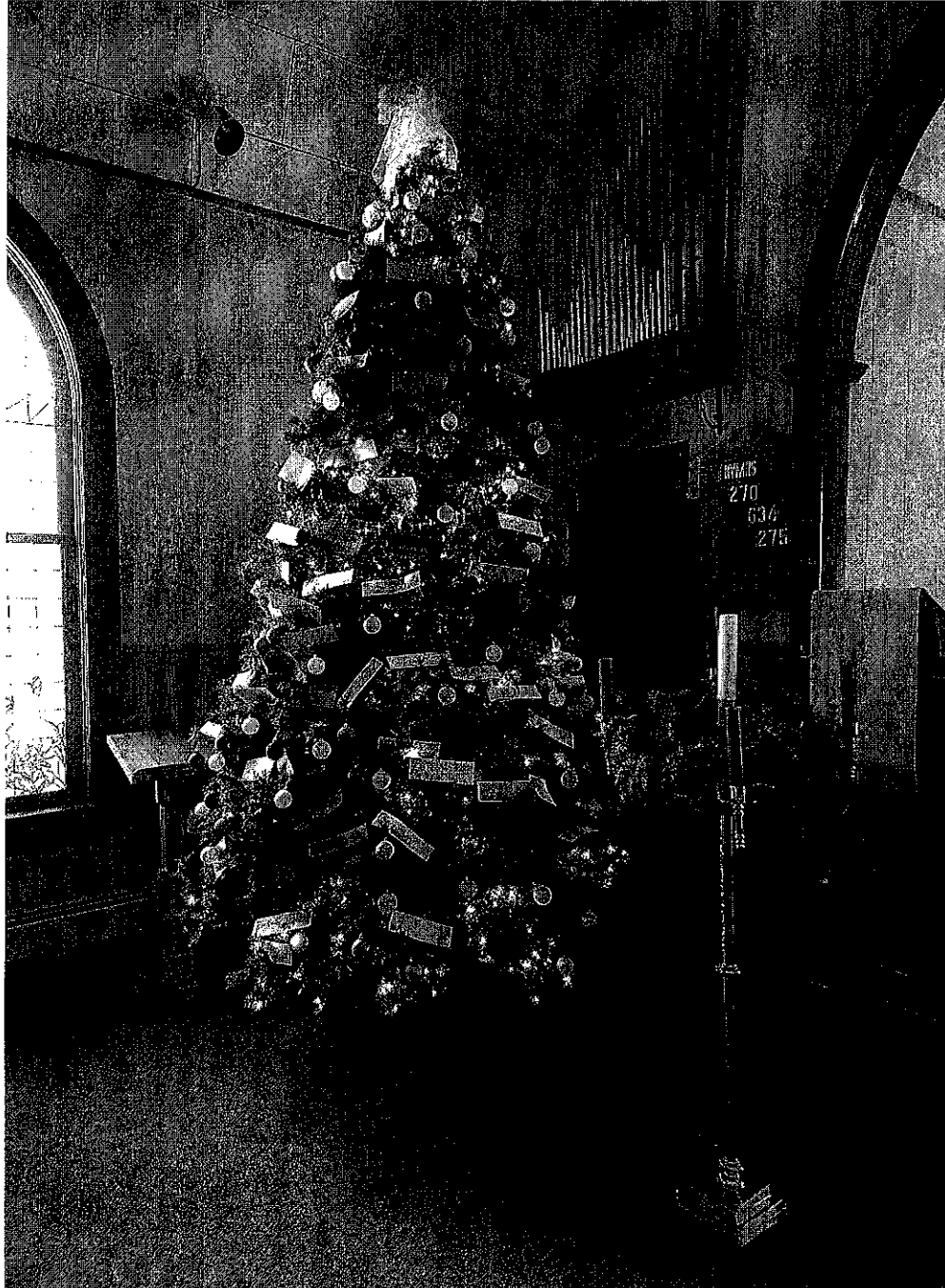


Hope Lutheran Church
2022 Annual Report
"From Generation to Generation"



**Hope Lutheran Church – Annual Congregational Meeting
January 29, 2023**

Greetings Announcements

Opening devotions and hymn #813 "Faith of Our Fathers"

Confession and Forgiveness pg. 94 ELW

Words of Institution and Communion

Offering

Hope Lutheran Church Annual Meeting January 29, 2023

I. Welcome and opening meeting from President Tim Gapp

II. Reading of Minutes from 2022 Annual meeting

III. Treasurer Annelies Seffrood's Reports & Financial Reports

A. Cemetery account report

B. Sunday School Account report

C. Youth Group Account report

D. Campership Account report

IV. Pastor Janet Miller's Report

V. Other Reports:

A. Statistical Reports

B. Church Council President's Report

C. Quilter's Group (former WELCA)

D. Kitchen Fund

E. Ministry Partners reports

1. South Dakota Synod

VI. Mission Plan for 2023 - Budget and Challenges

VII. Election of 2023 Officers- Thanks to all who served in 2022

VIII. Closing with the Lord's Prayer

January 30, 2022
Annual meeting

Opening -President Dustin Holt

M-Tim, 2nd-Lisa to proceed without a quorum.

*Reading of the 2020 Annual report. M-Cody, 2nd-Beth to approve.

Motion passed.

*Treasurer report-M-Tim, 2nd-Cody. Motion approved.

*Other financial reports read and approved.

*Pastor report-M-Kathy, 2nd-Diane. Motion approved.

*Other reports-read and approved

*2022 budget-M-Scott, 2nd-Tim to approve the budget

*Myla Kneeland gave a brief report on the activities of the quilters. She invited anyone who was interested to join them. She reported they had made approximately 147 quilts last year.

*Dustin thanked the quilters for their continuing ministry and the Sunday school teachers for all they do.

*Election of new council members: Carrie Rauen, Traci Ellingson, Laura Frankenhoff, Michell Urban, and Brianna Lindholm (youth rep). M-Tim, 2nd Jimmy. Motion passed to approve the election of new members.

*The Prairie Coteau Conference will be held the 1st Sunday in March at Grace Lutheran in Sisseton.

*SD Synod Assembly-Janet, Michael and Anne will be reps for the event.

*The 2022 Nominating committee and Auditing Committee will stay the same. One more member would be appreciated for the auditing committee.

*The Lutheran Outdoors appeal has been met.

M-Bruce, 2nd-Michael to adjourn the meeting

Closed with the Lord's prayer.

Hope Lutheran Church – Financial Audit – 1/15/2023

General Fund account #1110075253 - \$22,258.07 Ending Balance - Reconciled

HS Youth account #421450 - \$9,079.64 Ending Balance – Reconciled

Sunday School acct. #203703 - \$104.82 Ending Balance – Reconciled

Hope ELCW acct. #203653 – \$1,014.56 Ending Balance – Reconciled

Hope Kitchen acct. #1110073724 - \$2,378.29 Ending Balance – Reconciled -

Hope and Leb. Cemetery acct. #203679 – Reconciled balance \$14,859.48

Hope Youth Campership acct. #203695 – \$393.92 – Reconciled.

Hope Backpack acct. – Has been turned over to “Summit Cares” under SAEG

CD Balances - #7623 \$5000 Due 6/19/23 – Cemetery

#26980 \$2500 Due 2/3/2023 – Cemetery

#27566 \$15,000 Due 1/17/2024 - General

Findings:

- All accounts were reconciled with bank statements.

Audit Committee

Tim Gapp

Lori O’Farrell

Dear Brothers and Sisters in Christ,

"From generation to generation, you are our God!"

I think this year's Advent theme is so appropriate for this year's annual report. During our Advent season, we were encouraged to look at where we have been, see where we are going and acknowledge where we are right now. We listened to scriptures that reminded us of our God who was faithful in the past, is here with us now and will walk with our children into the future. So, in this annual report, I want us to try the same thing for the year.

Where has God taken us this year?

As the called pastor for Hope Lutheran Church in Summit and contracted out to the Florence Lutheran Parish, I've made a lot of miles. I've officiated over 15 baptisms- 6 at Hope, 6 at the Florence Parish and 3 at NeSoDak. Baptisms are always a joy for me to officiate. I was blessed to be able to baptize 2 of my grandchildren as part of this year's count.

I officiated at 8 funerals this year. Three of them were held at Hope Lutheran, One at Florence and the others were at Funeral Homes around the area.

During the Summer, I went with a combined group of youth from Summit and Florence to Klein Ranch Bible Camp. Florence rented a 15 person van and I drove them out and got to stay. It was a blast! The kids from both towns made friendships that will last. It could not have happened without the generosity of Hope Lutheran Church and the Florence Lutheran Parish.

We have a nice group of youth in confirmation this year. We have struggled with the weather canceling us several times, but I am enjoying being with the students.

Youth group has about 20 kids from junior high and high school. We've gone bowling, decorated the church for Christmas and undecorated it. We also had our "non"Christmas party in January. After having to cancel our Christmas party for three years, we finally had it late this year. (South Dakota weather wins a lot of the time.)

This year I did several classes for continuing education; Mental Health First Aid, Boundaries Workshops and Critical Race Theory. (The Critical Race Theory class was given by our synod so pastors could know what the current conversation about it meant.)

Advent and our theme "generation to generation" helped us look into the past and experience some of our traditions today. We had a fun "Lefse and Family" Advent day where the art of Lefse making was passed down to the Sunday School children and families of the church.

I continue to do online worships from my home. This year, our worships were watched a total of 8,757 times! Our average worship was watched by 250 people.

Where is God leading our generation next?

Hope Lutheran Church has a lot of plans for the next year. We want to get the church sided and that will mean some fundraising. We would like to replace the breaking inside part of our outside sign. We are looking for someone to help us fit the pew cushions to our pews. Our youth will begin their fundraising to go to the national youth convention in 2024.

We will continue to help the gospel be heard in the Florence Parish as we partner with them to pay for a part of my time.

We will preach and teach the Bible. We will come together in fellowship. We will help our neighbors both near and far. We will rejoice in baptisms and provide a place for the grief of those who have lost loved ones. God will be here and as all the generations before us, we will be here too.

Pastor Janet Miller- 2022

Statistical Reports Hope Lutheran Church 2022

Worship Statistics

Worships 48
Total Sunday Attendance 2049
Average Sunday Attendance 43
Lenten Worships 6
Total Lenten Attendance 188
Average Lenten Attendance 15

Baptisms 2022

Myah McFarland
Brock O'Farrell
Hoyt O'Farrell
Arlo Miller
Drew Buchele
Lottie Loise Sumner

First Communion 2022

Beckham Rauen
Connor Bronson
Masi Campbell
Raelee Ellingson
Mackenzie Maag
Paisley Maag

Membership Totals

2021 totals

2021 baptized Members 352
2022 New Members 1
 Baptisms 6
 Confirmations 0

Sub-Totals 359
Deaths 3
Out Transfers 2022 3

Total Membership 2022 Baptized 353

Tate Amdahl
Henry Niles

Confirmations 2022

None this year

Marriages 2022

Derik Olson and Hannah Dargetz
Christopher VanSchepen and Sydney Smith

Funerals and Burials

Francis Wohlleber
Mary Hawkins (funeral in Watertown burial here)
Delores Whitmyre (non-member)
Karin O'Farrell (non-member)
Ralph Labarr

New Members Received

Henry Niles

Transferred to other Congregations

Dylan, Theodore and Henry Amdahl

2021 Confirmed Members 250

250

Confirmed Members 246

Hope Lutheran Church Presidents Report – January 2023

2022 was a challenging and rewarding year for me acting as President for Hope Lutheran Church. Our challenges came from continuing to adjust after the Covid Pandemic, by opening up continuous communion and trying to re-gain our church attendance and attempting to make things feel normal. What I have discovered is that normal will look different moving forward. I believe there will be a new normal that will continue to evolve.

- The new normal will consist of continuing share our pastor with the Florence Parish which is in our second year of our share agreement. Pastor Janet has been willing and able to conduct 2 services weekly and provide pastoral services to accommodate both locations. Hope Lutheran Church will continue to be her church of call and she will continue to be employed by Hope Lutheran Church for which we do receive a monthly fee from the Florence Parish which is reviewed annually. This arrangement has helped us meet our budgetary goals and needs. It has also provided a pastor for the Florence Parish who had struggled for the past several years in meeting that need. They are extremely satisfied and appreciative of the cooperation we have given.
- The new normal will consist of continuing our weekly church service as well continuing with on-line services. Pastor Janet's on-line service have seen consistent growth and has allowed Hope Lutheran Church to reach out to our members and many others who are looking for ways to receive church services without having to physically attend. I feel this trend will likely continue and we should explore more options to serve this group of people who are looking for a church home.
- The new normal will consist of church members taking a more active role in church functions and taking a more hands on approach to the needs of our congregation and community. This could include taking a more active role in church services, church upkeep, church functions, Sunday School and pastoral assistance. Be willing to share your time and talents when you can.

We have some projects that we were not able to complete this last year due to the high cost of construction materials and the availability of contractors to complete the work. We still intend to re-side the outside of the church using materials that will be long lasting. We also hope to acquire land to expand the existing cemetery and replace the existing fence. These will be future projects the council will be reaching out for financial assistance as well as volunteer work that can be provided to complete these projects.

I want to thank Pastor Janet, the Church Council, Sunday school teachers, church staff and all who give their time and talents to make Hope Lutheran Church what it has been, what it is today, and what it will be for years to come. It has been humbling, rewarding and it has been my pleasure to serve with you. Best wishes for a great year to the new Church Council and the new Council President.

Sincerely,

Tim Gapp

Hope Lutheran Quilters

There are anywhere from 3-7 of us that try to meet the first and third Thursday of each month. Sometimes the weather gets in our way. Still, we managed to put together with the congregations help, 107 quilts, 70 school kits, and 5 personal care kits. Again, we thank all of you for your donations and help boxing and loading everything up!

These all went out the first week in October and by the first Thursday in October we started this year's projects. Remember, you don't need to know how to sew to help us, we'll teach you how to tie a knot to hold the quilts together and pin up the hems around the edges. It's only from 9-12 with a coffee break at 10:00. It's fun to get together and do a good deed at the same time.

Carrol Miller



South Dakota Synod
Evangelical Lutheran Church in America
God's work. Our hands.

Dear South Dakota Synod,

Grace and peace to you in the name of the Father, and of the Son, and of the Holy Spirit! On behalf of the 200 partner congregations and worshipping communities in South Dakota, your two companion synods, Cameroon and Nicaragua, and your 64 synod partners across the ELCA, I would like to thank you for your partnership. Together we have faithfully shared the Gospel of Jesus Christ with "all nations" (Matthew 28:19).



Please know that your local ministry has touched people's lives and hearts. Every item you donated to your local food ministry, every Sunday school lesson you prepared and taught, every quilt you assembled, every cup of coffee you poured at a funeral luncheon, and every other way you served your neighbor in Christ's name has touched someone else in Christ's name. You may not think much of it, but be assured that every kind gesture, every caring act, and every kind word is a faithful response to the faith God's Holy Spirit ignites in you. Thank you, for living out your faith in these various ways in your local context.

Together with the 200 partner congregations and worshipping communities in the South Dakota Synod, we also continue to be able to reach even farther than anyone's own local context, and, together, make a positive impact in Christ's name in all parts of our Synod. Please take a look at the "Ministry Celebration" insert that was included in our annual year end mailing. It will give you a numerical snapshot of the many things we have accomplished together as the South Dakota Synod. Thank you for being a partner in this journey.

Personally, I am grateful for your support of my rural ministry emphasis. Because of your generosity and your synod council's courage, I was able to extend a call to Pastor Alan Blankenfeld to serve as the first "South Dakota Synod Rural Liaison". This position is not funded through the synod's mission plan but instead through your generosity and in part through "Listen God's Calling" capital campaign resources. Because of your generosity, Pastor Alan has impacted and continues to impact rural communities in big ways. You may want to be careful if he asks you out for coffee, though, because he is known for planting and cultivating the seed of answering the call to ordained ministry.

We are also able to look back on a successful inaugural "Farm to Table Dinner," at which we raised over \$100,000.00 for Rural Ministry support. Through these gifts, and your synod council's support of Pastor Greg Johnson in his sabbatical project, we are now also able to offer you a free five-part study called "A Life of Faith," which can be used in a variety of ways. You can check out the series on the synod's webpage www.sdsynod.org. And finally, I am delighted to announce to you that, because of a generous donor, the South Dakota Synod was able to establish the first "Rural Ministry Sustainability Endowment." As it grows, it will assure that the Gospel of new life in Christ can be shared for generations to come.

In closing, let me share with you my deep sense of gratitude for the opportunity to serve the synod as your Bishop with a deep passion for rural ministry in times such as these. I am grateful for the call, your partnership in ministry and the grace of God, which sustains us in our daily life. Thanks be to God!

Journeying with you,

Bishop Constanze Hagmaier

"Journeying Together in Christ"

2022 will be remembered as a year of challenges--drought, global conflict, stock market corrections, and hard-hitting inflation. Plenty of reasons for anxiety and pulling back, saving and waiting. But also opportunities for genuine reflection about **generosity**. What does it look like? Is this fruit of the Spirit reflected in my life? How much is ENOUGH (for me)?



Lutheran Planned Generosity
of South Dakota

As a partner ministry of the South Dakota Synod, ELCA, **Lutheran Planned Generosity of South Dakota (LPGSD)** was created to join you on your journey to create a **personal legacy plan**—one that expresses your faith in Christ with gratitude and generosity.

LPGSD also walks alongside congregations hoping to create or revitalize their own legacy through an endowment fund, offering members the opportunity to share in the ministry and outreach of their Christian family. Walking and working together, we can create **greater impact** because of intentional plans and shared visions.

Where will your **generosity journey** will lead in 2023? LPGSD would be honored to serve as your confidential guide with no fees, commissions or obligations as you explore some of these destination options:

- ◆ **Income for You Now—Gifts to Ministry Later.** A charitable gift annuity provides you with fixed payments for life, with the remainder of the gift benefiting the ministries of your choice.
- ◆ **Gifts Beyond the Checkbook.** Grain, Cattle, Stocks, Mutual Funds, Real Estate--almost any appreciated asset can create a tax-efficient gift with greater impact.
- ◆ **Qualified Charitable Distribution.** Use your IRA to make tax-free gifts and reduce your adjusted gross income, even if you no longer itemize charitable contributions. Ask about the new **Non-Advised Fund** to spread the distribution of a large QCD over several years.
- ◆ **Give It Twice Trust.** A tool to create income for you and/or your family **and** the ministries you care about, oftentimes doubling the impact of your assets because of tax savings. A **great solution to the IRS's elimination of stretch IRAs.**
- ◆ **Legacy Gifts.** Name your favorite ministries as beneficiaries on an insurance policy, a bank account or an IRA, your will or trust, or even your home via a life estate or TOD (transfer on death) designation.
- ◆ **Congregational Endowment and Gift Policies.**
 - ◆ *Newly updated* document templates
 - ◆ Workshops for individuals, church councils and endowment committees

Ready for the journey?

Contact Kathy McHenry at **605.274.5030** or **kmchenry@sdsynod.org**.
Visit our website at **www.lpgsd.org** or find us on Facebook.

Regardless of your personal or financial situation,

your life can make a difference

South Dakota Synod, ELCA
Adopted Mission Plan
02/01/2023 - 01/31/2024

	Adopted 2023
Revenue	
Mission Support	
Undesignated Mission Support	1,870,465
SD Synod Mission Support	25,000
Total Mission Support-Congregations	1,895,465
Program Ministry Income	
Pine Ridge Reconciliation Center Income	45,000
Total Program Ministry Income	
Other Income	
DEM Support Staff Income	10,000
Interest Income	10,000
SDS Travel LLC Income	5,000
Misc Income	1,000
Total Other Income	26,000
Total Revenue	1,966,465
Expenses	
Churchwide Ministries	43%
Churchwide Support	804,300
Region III	
Region III Support	7,260
South Dakota Ministries	
South Dakota Partnership Ministries	
SD Ministries Support	10,750
Luther Seminary	74,492
Church Colleges (ELCA Pool)	6,445
Lutheran Social Services	74,492
Campus Ministry	131,356
Lutheran Outdoors	37,151
South Dakota Supported Ministries	
Heartland Ephphatha	6,445
Youth Ministry	3,600
Campus Ministry Capital	1,030
Good Samaritan Society	1
Chapel in the Hills	1
Woyatan Lutheran/Wambli Ska	19,000
Lutheran Planned Generosity	58,300
Total Shared Ministries	423,063

South Dakota Synod, ELCA
Adopted Mission Plan
02/01/2023 - 01/31/2024

	Proposed 2023
Executive Leadership	
Bishop	96,675
Assoc/Director of Ev Mission	6,375
Assoc-Mobility/Candidacy	79,909
Executive Staff Benefits	106,192
Exec Travel/Continuing Ed	34,800
Program Ministries	
Pine Ridge Reconciliation Center-Director	98,872
Youth Gathering Synod Coordinator	6,959
Companion Synod Coordinator	15,839
Support Staff and Office	
Support Staff Salaries/Benefit	-167,359
Synod Office Expenses	69,264
Augustana University Occupancy Fee	27,876
Synod Committees	
Synod Council	3,000
Support to Ministries Committee	2,100
Candidacy Committee	2,250
Multi-Cultural Ministry Committee	1,550
Companion Synods Ministry Committee	200
Evangelical Outreach Committee	1,500
Mission & Outreach	
Mission Congregation Start-up	4,000
Mission Strategy Table	2,000
Contingency	5,122
Total South Dakota Ministries	731,842
Total Expenses	1,966,465
Net Total	0



CHURCH ON THE STREET ANNUAL REPORT 2022

Dear Church on the Street Ministry Partners,

Your faithful generosity in prayer, kits, visits, quilt making, laundry pods, quarters, transporting donations, fundraising, Thrivent Action Teams, making and serving meals, telling the story, and making sure the good news of Jesus resurrection is known in hugs, tears, words, and clean laundry is remarkable. God's work is being done by a whole community by being Church together. Thank you for all so very much!

It is a joy for me to share what God is up to at Church on the Street, and I love getting to visit organizations and congregations all over the state and even in neighboring states! Frequently, a few lay leaders are able to join me. After a visit this summer, one of them leaned over and said, "I love hearing our story." And, in case you didn't know it, our story includes you! It is a story of God calling together a community that worships, serves, and walks together with those experiencing homelessness and poverty in Sioux Falls.

Here is a snapshot of who we are and what we do as a church:

- We worship monthly (6 months in the park & 6 months in the Multicultural Center)
- Our Laundry with Love ministry provides free laundry for families, a meal, new underwear, and fellowship
- We provide pastoral care at the Bishop Dudley Hospitality House, weekly
- We take countless walks to meet people where they are
- We ensure that folks are fed through our pantry and Fruits of the Freezer
- We collect, and pray over prayer requests are shared and prayed over and send them out to partners like you (email me chris@churchoonthestreet.org to join those who pray for our individuals)

Because of you, we can better meet the growing needs in our community. We're relocating our annual Health and Healing event to include more ways for people to experience wellness through screenings and checks - in addition to feeling a bit more dignity through haircuts and new family photos.

We continue to have excellent staff and regular volunteers who work hard and deeply love the Church on the Streeters. When we gather for worship, in the laundry mat, or even on visits, someone is always handing me a little bit of food they got from a food giveaway or some warm clothing they won't be eating or using and tells me to pass it along to someone who needs it. Generosity abounds at Church on the Street!

We say it often because it is true – It's great to be Church together!

Together we do God's work and reach out to one another with hope and love. This hard, holy work is a blessing to so many. Thank you.

God's blessings,
Rev. Chris Matson

Pastor & Mission Developer
327 S Dakota Ave
Sioux Falls, South Dakota 57103
Chris@churchoonthestreetsf.org
605-215-1143



DONATE NOW

Dear Sisters and Brothers in Christ,

Grace to you and peace from God, our Father, and from our Lord and Savior, Jesus, who is the Christ. Amen!

Greetings from your brothers and sisters in Christ behind the walls of the South Dakota State Penitentiary system. Thank you all for the outpouring of support and encouragement we have received this year. It has been a big year of transitions, and God is at work in amazing ways in the lives of people inside and outside the walls.

The beginning of this year saw us restricted from even being allowed inside the prison due to lingering Covid restrictions, to again being able to gather for worship in-person. And you stepped up; we have had great groups visit both "The Hill" in Sioux Falls and at Mike Durfee State Prison in Springfield, SD, to worship with us.

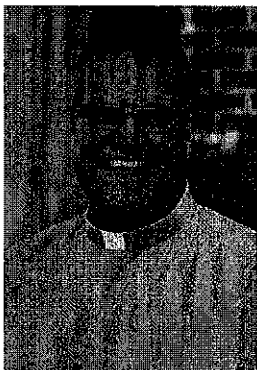
In February, we bid Pr. Wayne Gallipo a joyous farewell as he transitioned into retirement. I want to thank Pr. Wayne for his faithful service, hard work, and ministry to St Dysmas. Our staff including our office manager, Susan Zacher, and music directors, Diane Larson and Joran Olson, all worked so hard to endure very challenging times in the history of both the St Dysmas ministry and the world in general.

Emerging from Easter season in the promise that God makes all things new, on May 1, I began serving as the Senior Pastor and Development Director to St Dysmas of South Dakota. Though I am new to leading this ministry, I inherited a strong legacy of God's grace at work in challenging places. I give thanks that each and every day I get to witness God bringing new life from death in the lives of those who society often sees as undeserving. Worship attendance has increased at "The Hill," MDSP, and the Yankton Unit. I am grateful for the work of Pr. David Bentz, who serves at MDSP, and Pr Dani Jo Bierwagen, who serves at the Yankton Unit. They are both faithful shepherds of God's flock.

We are guided by a faithful and hardworking Associate Council that helps guide the strategy of the St Dysmas ministry. Bringing my business management background with me into leading this ministry, I know I have certainly thrown new ways of thinking at them, and they have been greatly supportive.

Mitch Wilson continues to serve as our Re-Entry Coordinator. During Covid, a lot of the momentum of his work took a hit, but he has continued to accompany those transitioning from incarceration back into the "normal world," and he does a great job. We look forward to talking to congregations about welcoming justice-impacted individuals to be part of your faith community. We know that making connections with these individuals leads to the success of their transition.

Above all, I give thanks to God for the many gifts he has entrusted to us. Through the faithful partnerships of many congregations, families, and individuals, we can do the work of proclaiming the good news of Jesus Christ to those who need to hear it most; "setting the captives free..."



Grace and peace to you always!



Pastor Jeff Backer
Senior Pastor/Development Director



Donate Now!



A PARTNER IN HEALING OUTREACH



2022 Annual Report to Congregations

LSS Services Focus on Strengthening Families

The challenges of the last three years have changed the landscape of the work that we do at LSS. Not only have local community needs shifted, but funding, staffing and service delivery models have shifted.

Our strategic planning process engaged the Governing Board of Directors, executive and leadership teams, and LSS staff in conversations about how those changing dynamics will impact us over the next four years.

At LSS we're passionate about making a difference in South Dakota communities and addressing emerging community needs. We believe that a focus on services that strengthen families and help keep youth at home and in their community will help attain our vision for South Dakota—that all South Dakotans will be healthy, safe and accepted. We have established a number of internal operational strategies to be achieved for us to reach that goal and are hopeful that after four years we will be able to say that we made a significant impact.



Rebecca Kiesow-Knudsen
President/CEO

With Your Support, Together We Make a Meaningful Impact on Families

Your donations enable LSS to transform lives through high standards of quality service and service delivery. LSS monitors and reviews client outcomes as a gauge of programmatic quality. With your congregation's support, we are better able to carry out our vision—bringing clarity, stability, family and support to people of all ages, families of all kinds and communities of all sizes. Thank you!

- Functional Family Therapy outcomes are strong. **97%** of youth and **98%** of parents reported improved family functioning. **96%** of youth were in school or working at discharge.
- Youth at New Alternatives were successful at discharge. **96%** were discharged to safe and stable housing and **94%** were employed or in school at discharge.
- Youth in residential treatment programs were successful at discharge. **81%** of youth were discharged to a less restrictive environment. **100%** of youth who were referred by schools were discharged to their home with a parent or relative.

A Glimpse at Our Strategic Plan

Here is a preliminary glimpse of our strategic plan. From these operational strategies, we are developing action plans and a four-year line of site.

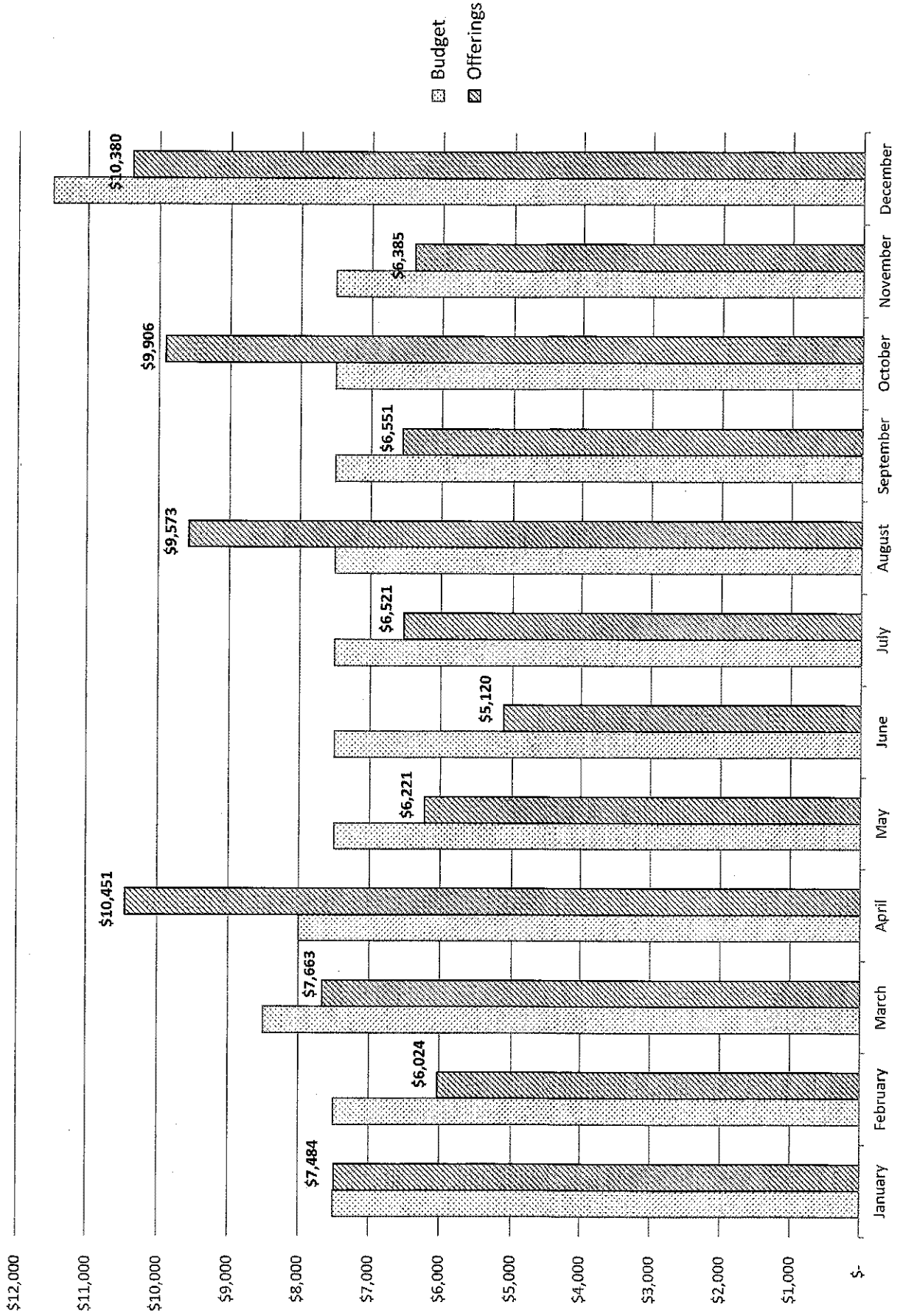
ORGANIZATIONAL	OPERATIONAL
Strategy 1: Pursue programmatic opportunities that strengthen families.	Strategy 1: Create a positive culture that helps recruit, retain and support a high quality workforce to meet program goals and objectives.
Strategy 2: Pursue programmatic opportunities that keep children and youth in their homes and communities.	Strategy 2: Ensure long-term financial viability for the organization and individual programs.

Your continued support will help us accomplish our goals and better serve our South Dakota communities.

2022 Monthly Offerings vs Budget

(does not include memorials, special gifts, other income)

2022 Total Offerings were \$3,220.73 below budget



Hope Lutheran Church
2022 Actual vs Budget and 2023 Budget
 January - December 2022

	2021	2022		2023	
	ACTUAL	BUDGET	ACTUAL	BUDGET	
INCOME: OFFERINGS, GIFTS, OTHER					
41100 · Regular (Sunday) Offerings	\$ 91,354	\$ 90,000	\$ 87,201.27	\$ 90,000	\$7,500/month
41200 · Special Services Offerings	\$ 4,488	\$ 5,500	\$ 5,078.00	\$ 6,000	
42100 · Gifts & Memorials	\$ 15,550	\$ 14,000	\$ 10,851.47	\$ 10,500	includes propane
43000 · Florence Parish Contribution	\$ 15,000	\$ 36,000	\$ 36,000.00	\$ 42,000	\$3,500/month
44440 · Special Offerings to Pass On	\$ 1,573	\$ 1,200	\$ 770.00	\$ 1,500	
44350 · Christmas Greenery Income			\$ 773.45	\$ -	
44300 · Special Event Donations		\$ 25,000	\$ -	\$ 80,000	Siding & Partition
44100 · Interest Earned	\$ 92	\$ 222	\$ 81.02	\$ 74	
44200 · Thrivent	\$ 1,382	\$ 1,200	\$ 425.00	\$ 1,100	
44600 · Amazon Smile			\$ 56.21	\$ -	
44000 · Other Income - Other	\$ 2,862	\$ 1,839	\$ 1,823.25	\$ 2,500	Wind payment
Total Offerings & Gifts & Other Income	\$ 147,127	\$ 174,961	\$ 143,059.67	\$ 233,674	
EXPENSES					
71100 · HSYG National Gathering Exp			\$ (150.00)		
66110 · Pastor Salary	\$ 45,533	\$ 40,624	\$ 40,636.83	\$ 43,040	* ord 2008 + 2 point
66120 · Pastor Housing Allowance	\$ 12,000	\$ 20,000	\$ 20,000.04	\$ 22,000	* \$10,000 to housing
66150 · Pastor Social Security	\$ 4,397	\$ 4,638	\$ 4,625.25	\$ 4,976	
66160 · Pastor Benefits	\$ 30,039	\$ 33,107	\$ 32,565.72	\$ 34,688	
66170 · Pastor Medical Reimbursement			\$ 160.56	\$ 180	
66191 · Relief Pastor Salary	\$ -	\$ 350		\$ 350	2 Sundays
66192 · Relief Pastor Mileage/Housing	\$ -	\$ 40		\$ 50	
66310 · Secretary Salary	\$ 4,200	\$ 4,200	\$ 4,200.00	\$ 4,500	
66320 · Janitor Salary	\$ 2,400	\$ 2,580	\$ 2,365.00	\$ 2,760	
66330 · Organist Salary	\$ 920	\$ 2,400	\$ 2,400.00	\$ 2,520	\$40/service
60200 · Auto/Mileage Expenses	\$ 1,191	\$ 1,200	\$ 1,391.50	\$ 1,450	
61800 · Continuing Ed & Conferencs	\$ 680	\$ 500	\$ 789.56	\$ 900	
63300 · Insurance Expense	\$ 3,150	\$ 3,545	\$ 3,601.26	\$ 3,849	
63130 · Confirmation / Adult Ed	\$ 268	\$ 300	\$ 398.91	\$ 350	
63120 · Sunday School Materials	\$ 537	\$ -	\$ 74.20	\$ 250	
63110 · Worship Materials	\$ 1,089	\$ 1,450	\$ 1,363.61	\$ 1,200	
63200 · Fellowship Expenses	\$ 113	\$ -	\$ 180.00	\$ 220	
62200 · Office Supplies	\$ 725	\$ 100	\$ 43.65	\$ 750	
62300 · Printing and Reproduction	\$ 1,173	\$ 900	\$ 1,736.07	\$ 1,500	
62500 · Dues and Subscriptions	\$ 104		\$ 176.92	\$ 150	
62600 · Postage and Delivery	\$ 821	\$ 1,150	\$ 777.26	\$ 1,500	
62000 · Office Expenses - Other	\$ 462	\$ 141	\$ 204.59	\$ 462	
Total 62000 · Office Expenses	\$ 3,285	\$ 2,291	\$ 2,938.49	\$ 4,362	
67500 · Church Decorations	\$ 1,810	\$ -	\$ 91.47	\$ 250	
67100 · Landscaping Expenses	\$ 1,200	\$ 1,800	\$ -	\$ 5,100	
67200 · Repairs and Maintenance	\$ 707	\$ 36,100	\$ 2,132.88	\$ 81,000	siding & partition
67300 · Small Tools and Equipment	\$ 105	\$ -	\$ 18.05	\$ 500	
67410 · Propane/Heat	\$ 3,919	\$ 3,500	\$ 6,467.33	\$ 5,000	
67420 · Electricity	\$ 2,020	\$ 2,100	\$ 1,619.68	\$ 2,000	
67430 · Water/Sewer	\$ 804	\$ 840	\$ 888.00	\$ 960	
67440 · Telephone & Internet	\$ 1,167	\$ 1,620	\$ 1,388.76	\$ 1,500	
61410 · Synod Mission Support	\$ 7,318	\$ 6,800	\$ 7,347.09	\$ 7,200	
61420 · Good Samaritan Fund	\$ -	\$ 600	\$ 144.17		
61450 · Special Offerings Sent On	\$ 1,573	\$ 1,200	\$ 770.00	\$ 1,500	
61470 · Thrivent Share	\$ -	\$ 500	\$ 500.00	\$ 150	
69000 · Miscellaneous Expenses	\$ 604	\$ 359	\$ 653.75	\$ 820	
Total Expenses	\$ 131,311	\$ 172,643	\$ 139,562.11	\$ 233,624	
NET OFFERINGS & INCOME OVER EXPENSES	\$ 15,815	\$ 2,317	\$ 3,497.56	\$ 50	

2023 Church Council Members			
<u>Name</u>	<u>Position</u>	<u>Term Ends</u>	<u>Phone #</u>
Carrie Rauen	Youth	January 2024	
Traci Ellingson	Member	January 2024	
Laura Frankenhoff	Member	January 2024	
Michelle Urban	Member	January 2024	
Brianna Lindholm	Youth	January 2024	
Dustin Holt	Member	January 2025	
Ben Graf	Member	January 2025	
Tamijo Bronson	Member	January 2025	
Maddie Hinkelman	Youth	January 2025	
Levi Whempner	Youth	January 2025	
Anne Seffrood	Church Treasurer		
Dawn Wright	Church Secretary		

- The following have been nominated for 2-year Council Positions:
 - Dustin Holt
 - Ben Graf
 - Tamijo Bronson
 - Maddie Hinkelman-Youth
 - Levi Whempner-Youth
- (We are allowed 2 layperson delegates and 1 youth (16-21) delegate to attend the following meetings.)
 - Prairie Coteau Conference Assembly –
 - South Dakota Synod Assembly –
- The 2023 Nomination Committee will be: Jacky Adolph, Stacey Amdahl, Billi Whempner and two council members.
- The 2023 Auditing Committee will be: Lori O’Farrell, Tim Gapp, (1 vacancy to be filled)